

Pistol Grip Air Screwdrivers

Adjustable Shut-Off Clutch

1 Series

Time-tested design provides repeatable results, day in and day out, at an economical price.

Features

- Torque range: 2.7 – 45 in-lbs (0.3 – 5.1 Nm)
- Speeds: 250 – 2,000 rpm
- Compact and lightweight
- Coated grip for operator comfort
- Recommended for applications where precise torque control is required

Service and Accessories

Manuals:

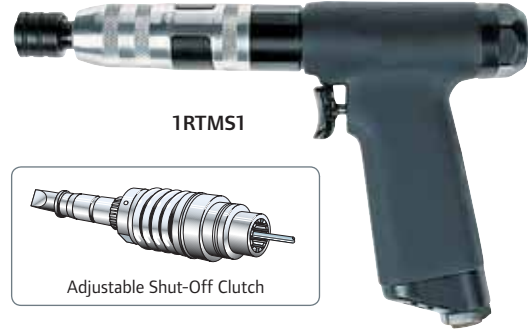
- 16574550
- 80167265

Accessories:

- Torque arm: QTA010
- Spring balancer, see page 177
- Spindle accessories, see page 183
- Suspension bail: 3RA-365
- Exhaust hose: 3RL-284

Kits:

- Tune-up kit: 3RA-TK2



1RTMS1

Adjustable Shut-Off Clutch

Model	in-lbs (Nm)	in-lbs (Nm)	in-lbs (Nm)	rpm	lbs (kg)	in (mm)	in (mm)	in	cfm (L/min)
DC TRIGGER + PUSH-TO-START									
1RTMS1	4.4 – 15.9 (0.5 – 1.8)	6.2 – 20.4 (0.7 – 2.3)	–	1,650	1.5 (0.7)	8.5" (217)	0.7" (17)	1/4"	13 (368)
1RTNS1	2.7 – 15.9 (0.3 – 1.8)	4.4 – 23.0 (0.5 – 2.6)	9.7 – 30.1 (1.1 – 3.4)	1,000	1.5 (0.7)	8.5" (217)	0.7" (17)	1/4"	13 (368)
1RTQS1	2.7 – 15.9 (0.3 – 1.8)	4.4 – 23.0 (0.5 – 2.6)	9.7 – 45.1 (1.1 – 5.1)	500	1.5 (0.7)	8.7" (222)	0.7" (17)	1/4"	13 (368)

Series			
1	73 dBa	1/8" NPT	1/4" (6 mm)

Pistol Grip Air Screwdrivers

Adjustable Cushion Clutch

1 Series

Time-tested design provides repeatable results day in and day out at an economical price.

Features

- Torque range: 1.5 – 30 in-lbs (0.2 – 3.4 Nm)
- Speeds: 1,000 – 1,650 rpm
- Compact and lightweight
- Coated grip for operator comfort
- Recommended for applications that require a torque limiting clutch

Service and Accessories

Manuals:

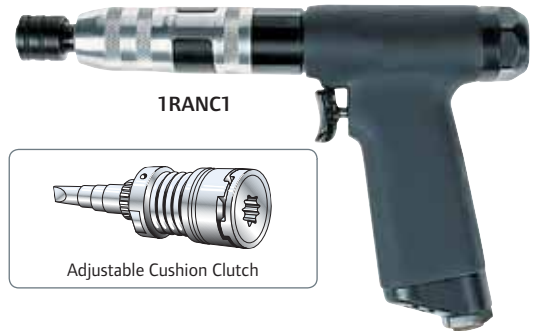
- 16574550
- 80167265

Accessories:

- Torque arm: QTA010
- Spring balancer, see page 177
- Spindle accessories, see page 183
- Hanger: 3RA-365

Kits:

- Tune-up kit: 3RA-TK2



Model	in-lbs (Nm)	in-lbs (Nm)	in-lbs (Nm)	rpm	lbs (kg)	in (mm)	in (mm)	in	cfm (L/min)
TRIGGER + PUSH-TO-START									
1RAMC1	2.5 – 15.9 (0.3 – 1.8)	6.2 – 20.4 (0.7 – 2.3)	–	1,650	1.5 (0.7)	8.5" (217)	0.7" (17)	1/4"	13 (368)
1RANC1	1.5 – 15.9 (0.2 – 1.8)	4.4 – 23.0 (0.5 – 2.6)	9.7 – 30.1 (1.1 – 3.4)	1,000	1.5 (0.7)	8.5" (217)	0.7" (17)	1/4"	13 (368)

Series			
1	73 dBa	1/8" NPT	1/4" (6 mm)

Inline Air Screwdrivers

Adjustable Shut-Off Clutch

1 Series

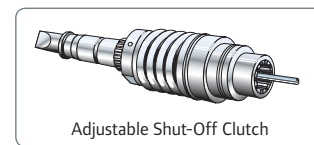
Time-tested design provides repeatable results day in and day out at an economical price.

Features

- Torque range: 3.7 – 45.1 in-lbs (0.3 – 5.1 Nm)
- Speeds: 500 – 2,800 rpm
- Compact and lightweight
- Coated grip for operator comfort
- Simple push-button reverse
- Recommended for joints where precise torque control is required



1RPQ51



Adjustable Shut-Off Clutch

Service and Accessories

Manuals:

- 16574550
- 80167265

Accessories:

- Torque reaction arm: QTA010
- Spring balancer: BLD1
- Spindle accessories, see page 183

Kits:

- Reversible motor kit: 0-TK2

Model	in-lbs (Nm)	in-lbs (Nm)	in-lbs (Nm)	rpm	lbs (kg)	in (mm)	in (mm)	in	cfm (L/min)
DC LEVER START									
IRLNS1	2.7 – 15.9 (0.3 – 1.8)	4.4 – 23 (0.5 – 2.6)	9.7 – 30.1 (1.1 – 3.4)	1,000	1.1 (0.5)	9.2" (234)	0.6" (14)	1/4"	13 (368)
DC PUSH-TO-START									
IRPLS1	4.4 – 13.3 (0.5 – 1.5)	–	–	2,800	1.1 (0.5)	8.4" (213)	0.6" (14)	1/4"	13 (368)
IRPMS1	4.4 – 15.9 (0.5 – 1.8)	6.2 – 20.4 (0.7 – 2.3)	–	1,650	1.1 (0.5)	8.7" (222)	0.6" (14)	1/4"	13 (368)
IRPNS1	2.7 – 15.9 (0.3 – 1.8)	4.4 – 23 (0.5 – 2.6)	9.7 – 30.1 (1.1 – 3.4)	1,000	1.1 (0.5)	8.7" (222)	0.6" (14)	1/4"	13 (368)
IRPQ51	2.7 – 15.9 (0.3 – 1.8)	4.4 – 23 (0.5 – 2.6)	8.9 – 45.1 (1.0 – 5.1)	500	1.1 (0.5)	8.7" (222)	0.7" (17)	1/4"	13 (368)

Series			
1	73 dBA	1/8" NPT	1/4" (6 mm)

Inline Air Screwdrivers

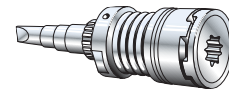
Adjustable Cushion Clutch

1 Series

Time-tested design provides repeatable results day in and day out at an economical price.



1RPMC1



Adjustable Cushion Clutch

Features

- Torque range: 2.7 – 30.1 in-lbs (0.3 – 3.4 Nm)
- Speeds: 1,000 – 1,650 rpm
- Compact and lightweight
- Coated grip for operator comfort
- Simple push-button reverse
- Recommended for joints that require a torque limiting clutch

Service and Accessories

Manuals:

- 16574550
- 80167265

Accessories:

- Torque reaction arm: QTA010
- Spring balancer: BLD1
- Spindle accessories, see page 183

Kits:

- Motor tune-up kit: 0-TK2

Model	in-lbs (Nm)	in-lbs (Nm)	in-lbs (Nm)	rpm	lbs (kg)	in (mm)	in (mm)	in	cfm (L/min)
DC LEVER START									
1RLMC1	4.4 – 15.9 (0.5 – 1.8)	6.2 – 20.4 (0.7 – 2.3)	–	1,650	1.1 (0.5)	8.7" (222)	0.6" (14)	1/4"	13 (368)
1RLNC1	2.7 – 15.9 (0.3 – 1.8)	4.4 – 23.0 (0.5 – 2.6)	9.7 – 30.1 (1.1 – 3.4)	1,000	1.1 (0.5)	8.7" (222)	0.6" (14)	1/4"	13 (368)
DC PUSH-TO-START									
1RPMC1	4.4 – 15.9 (0.5 – 1.8)	6.2 – 20.4 (0.7 – 2.3)	–	1,650	1.1 (0.5)	8.7" (222)	0.6" (14)	1/4"	13 (368)
1RPNC1	2.7 – 15.9 (0.3 – 1.8)	4.4 – 23.0 (0.5 – 2.6)	9.7 – 30.1 (1.1 – 3.4)	1,000	1.1 (0.5)	8.7" (222)	0.6" (14)	1/4"	13 (368)

Series	73 dBA	1/8" NPT	1/4" (6 mm)
1	73 dBA	1/8" NPT	1/4" (6 mm)